

Don Milner

ARTIST

painter • tutor



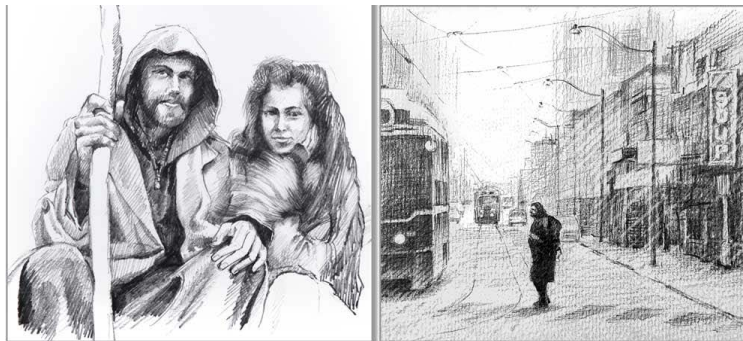
INFORMATION - COSTS

'Draw-Draw and more drawing'

- explore great drawing - (*Drawing & Charcoal*)

1st - 2nd June, 2024 (*New Content*)

(2 days) workshop at my Buderim studio - Sunshine Coast



Welcome and thank you for your interest in my **'Draw - Draw and more drawing'** workshop on 1st - 2nd June (2 Days) and sharing some fabulous creative drawing time as we all explore much of the Drawing Process together.

Love to have you come along and join in as I know you will really enjoy this fabulous creative drawing experience with lots of fantastic innovative stuff here mixed with heaps of useful techniques to learn in the company of like-minded artists and it's just darn good drawing fun time. This workshop will offer you a fabulous opportunity to grow and develop valuable drawing skills and techniques. It's also packed with heaps of essential information and generous amounts of drawing tips and tricks to build your self-confidence allowing you to create more fantastic drawings sooner.

Your creative artistic journey begins with exploring dynamic design concepts thru small studies followed by applying these techniques into your very own drawing fantastic. Build confidence with easy to learn techniques, better understanding of tone values and textural effects which all combine for fabulous and exciting results in your drawings to take home. Heaps of tips and tricks along the way for lots of great learning opportunities.

Focus on drawing and rendering techniques, composition, proportions, dynamic cropping for best use of photo reference (what to use, what to leave out and why.?) Discover the power of tonal and textural effects and so much more... Simple but effective techniques which you can confidently take away with you and use again at home.

* This workshop is suitable for all student levels....

Please feel free to forward this information to anyone who you think may also be interested in coming along

Information or book your place.. [Dons home workshop information](#)

email Don: info@donmilnerartist.com.au or: www.donmilnerartist.com.au/contact

Don Milner

ARTIST

painter • tutor



'Draw - Draw and more drawing' Two whole days dedicated to creating your own fantastic drawings. I spend lots of one-on-one time to make sure you understand the equipment and tools, process, execution and development of all the drawing concepts and techniques with live, in-class demos to show you how I do it and I am with you every step of the way to help and assist whenever needed to give you a huge heads up with every aspect of your drawing process including how to use and get the most from equipment & tools, best practice and techniques. Every day filled with heaps of great tips and tricks not found in books.

STUDENTS DAILY SCHEDULE

Day 1.. Let's get started 'Exploring possibilities and options'

- * A brief introduction to drawing looking at tools and equipment
- * As part of the introduction we look at 'Best practice' and use of pencils, etc..
- * Deciding how and what to draw - size and format, style, etc..
- * Finding and choosing reference. What to include - what to leave out & why.?
- * Composition - Tell one story - How to lead the viewers eye into your drawing
- * Tone values and rendering technique for maximum effect and drama
- * Review reference and choose what to include and what to leave out.?
- * Begin by sketching from reference and consider composition and placement
- * Gradually adding tones and details to render a good likeness of your subject
- * A quick group review of all drawings - can you do better.?
- * Review and refine where required and complete your drawing

Day 2.. "Drawing your favourite subject"

Now you have a much better idea of how to create a great drawing (from Day 1) you will begin your second 'fabulous drawing' and you have a full day to complete it applying and consolidating what you have learnt already

- * Choose your own subject to draw and select suitable reference
- * Decide on format, content, composition, style, etc..
- * Sketch out your ideas using smaller sized test sketches
 - Review your options - tone values, reference choice, etc..
- * Now begin rendering your finished piece
- * A quick class review - can you adjust for a better result.?
- * Adjust until satisfied - refine and complete your drawing
- * Quick review and impromptu showing of class drawings created by students

Location:

The workshop is held at my home/studio at..
32 Coachwood Street, Buderim on the Sunshine Coast

Teaching space is very comfortable and quiet, easy street parking, no steps, lots of natural light and a gorgeous view to the coast.



Don Milner

ARTIST

painter • tutor



Payment Options:-

Total cost is only **\$390* per student** for the full 2 days of tuition
(6 hours per day = Total 12 hours of tuition over 2 days)

Option - A Payment in full \$390 with nothing further to pay on the day

Option - B Deposit of \$150 - Balance (\$240) paid prior to or upon arrival

Payment details below.. Please email me once you have made your payment so I can enter your payment and information into my booking records to secure your place

** PLEASE NOTE: A cancellation fee of \$150 applies if you cancel within 7 days of the workshop start date*

Bank Direct Deposit to:-

Account Name: Don Milner Logo/Web Page/Illustration/Design

Bank: Auswide Bank

BSB: 645646 Account #: 103943633

(Please state your name and workshop your payment is for when paying)

Cost and daily schedule:-

Cost total: \$390 per student

Also includes: Morning and afternoon tea/coffee with delicious treats

Time per day: (6 hours per day - 2 days)

Arrive: 8.45am for a 9am start

Morning break: 10.30pm approximately (15 minutes)

Lunch: 12 - 1pm (Students to bring their own lunch)

Afternoon break: 2.30pm approximately (15 minutes)

Brushes down: 4pm

PLEASE NOTE:

- I DO NOT provide gluten free options so you will need to bring your own
- Students DO NEED to supply their own lunch, plus any special foods or drinks (Microwave & Fridge available)

Don will lead you through the entire creative drawing process as he also draws the exercises with you to show how he does it and you get to follow his lead and learn as you go. You will enjoy plenty of time drawing and Don also does relevant, live in-class demonstrations of specific techniques he wants you to learn.

You will probably have most of what is required already if you have drawn before, however I have my required Materials and Equipment list available to download from my website below..

[Dons home workshop information](#)

** Students will supply all of their own materials and equipment as per my list*

